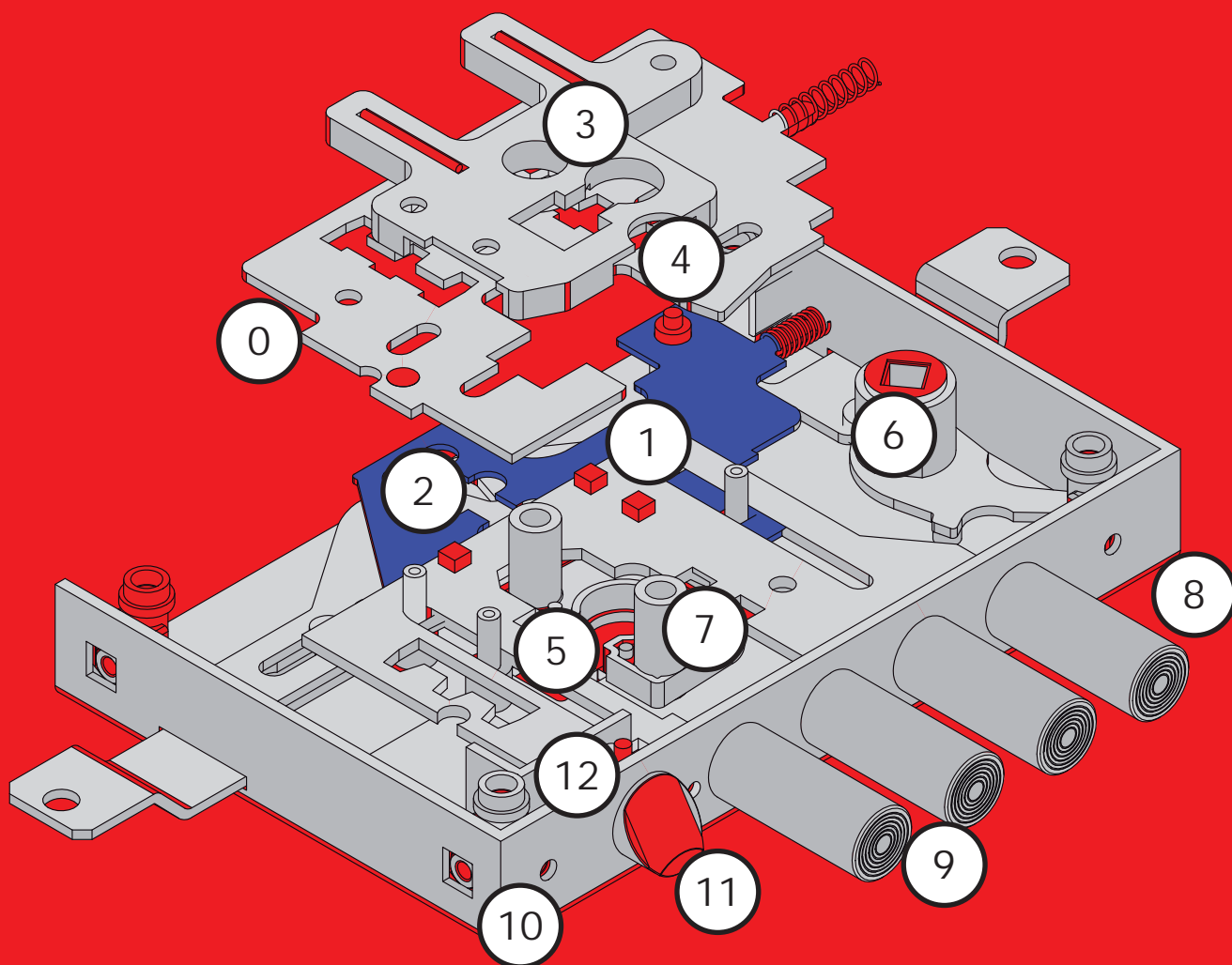


Incasso Profilo Europeo Leve

Incasso
Profilo Europeo
Leve

SICUREZZA

- 00 . Meccanismo a doppia gorge vincolata
- 01 . 3 mantonnet
- 02 . Sistema di anti-sollevamento della gorge
- 03 . Piastra interna con spine anti-trapano
- 04 . Saracinesca per blocco serratura
- 05 . Porta cilindro anti-sfilamento
- 06 . Blocco del quadro maniglia in posizione di chiuso
- 07 . Fori fissaggio protezione cilindro M6 o M8



RESISTENZA

- 08 . Resistenza al carico laterale >6000 kg
- 09 . Resistenza al carico assiale >1000 kg

PRATICITA'

- 10 . Fissaggi all-inclusive: planare doppio diametro, infilare e dadi in gabbia
- 11 . Scrocco con sagoma anti-frizionamento
- 12 . Scrocco reversibile

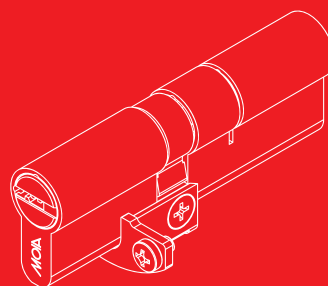
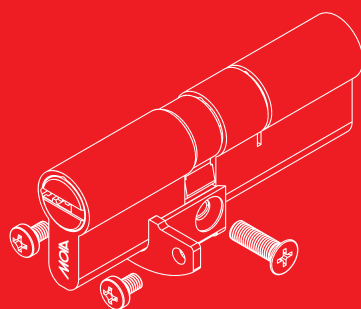
AFFIDABILITA'

- Certificazione in classe 7 secondo EN12209
- Oltre 100.000 cicli di apertura

DOTAZIONE STANDARD

1 porta cilindro

ISTRUZIONI MONTAGGIO PORTA CILINDRO SU SERRATURA A LEVE



INQUADRA IL QR CODE
CON IL TUO SMARTPHONE



POTRAI VEDERE IL VIDEO
CON LE ISTRUZIONI DI
MONTAGGIO

CODICE PARLANTE

6 = fissaggio planare
7 = fissaggio infilare,
con testiera

28 = 4 chiavistelli passo 28
37 = 3 chiavistelli passo 37

5 = profilo europeo a leve

D = mano destra
S = mano sinistra

B = blocco o
trappola

6 5 4 / 28 0 D F B

1 = laterale
2 = laterale con scrocco
3 = triplice
4 = triplice con scrocco
5 = quintuplice
6 = quintuplice con scrocco

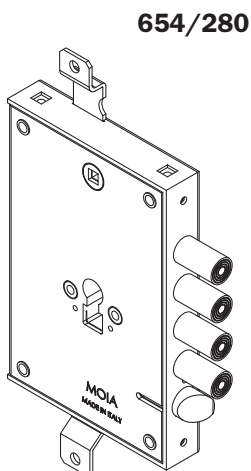
0 = ingresso chiave 63
1 = ingresso chiave 73

F = fissaggio con
scarpetta porta cilindro

IDENTIFICATIVI SERRATURA

INGRESSO CHIAVE
mm. 63

PASSO CHIAVISTELLI
mm. 28



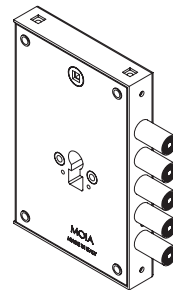
654/280

CODICE	MANO			
	DX	SX		
654/280DF	●			
654/280SF		●		
654/280DFB	●			●
654/280SFB		●		●
754/280DF	●		●	
754/280SF		●	●	
754/280DFB	●		●	●
754/280SFB		●	●	●

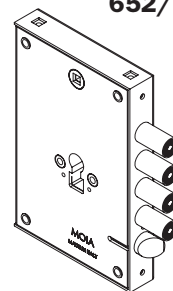
CODIFICA

VARIANTI

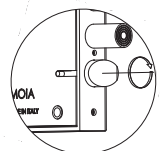
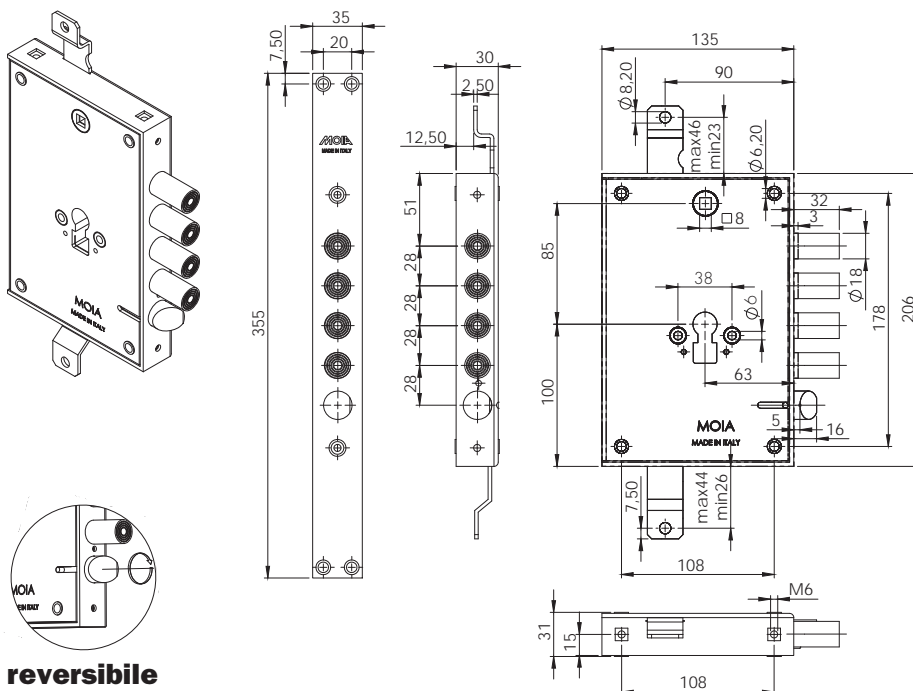
651/280



652/280

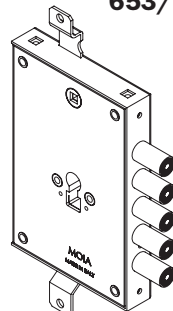


DISEGNO TECNICO

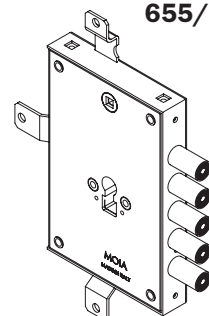


reversibile

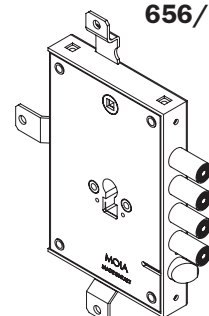
653/280



655/280



656/280



IMBALLO



OPTIONAL

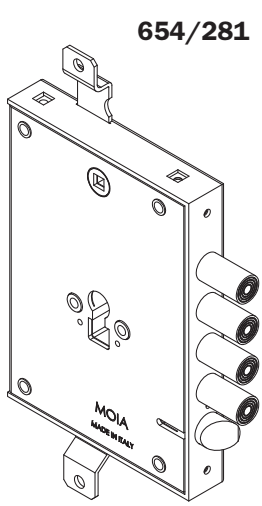


Incasso
 Profilo Europeo
 Leve

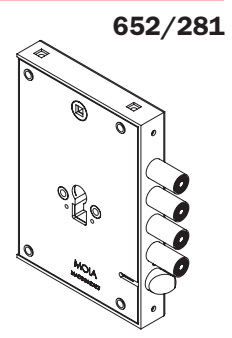
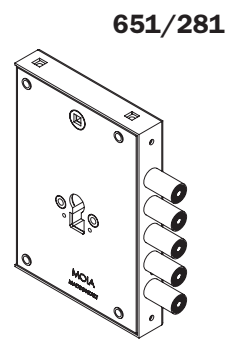
IDENTIFICATIVI SERRATURA

INGRESSO CHIAVE mm. 73	PASSO CHIAVISTELLI mm. 28
----------------------------------	-------------------------------------

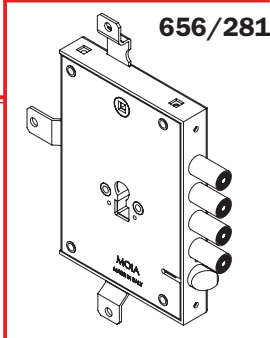
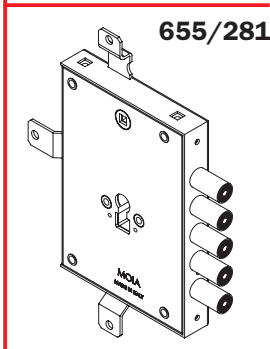
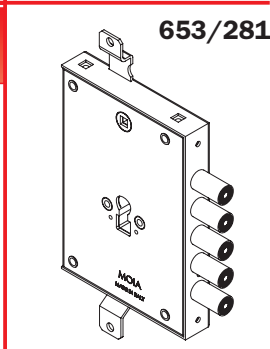
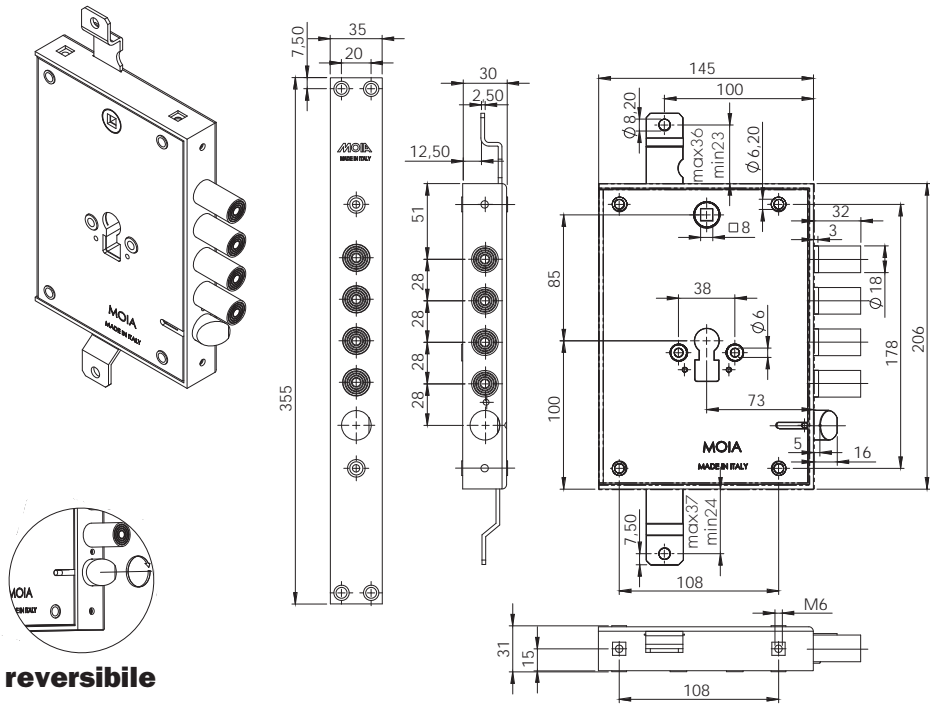
VARIANTI



CODIFICA	CODICE	MANO		
		DX	SX	
	654/281DF	●		
	654/281SF		●	
	654/281DFB	●		●
	654/281SFB		●	●
	754/281DF	●		●
	754/281SF		●	●
	754/281DFB	●		●
	754/281SFB		●	●



DISEGNO TECNICO

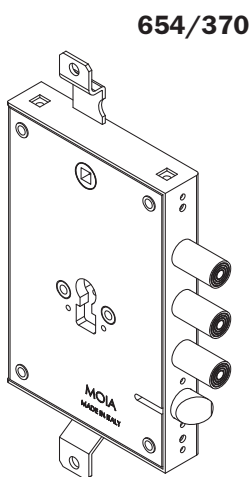


IMBALLO

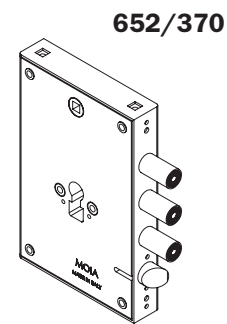
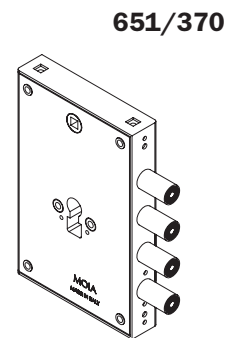
OPTIONAL

IDENTIFICATIVI SERRATURA	
INGRESSO CHIAVE mm. 63	PASSO CHIAVISTELLI mm. 37

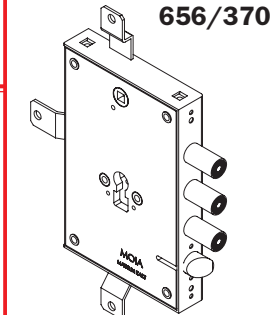
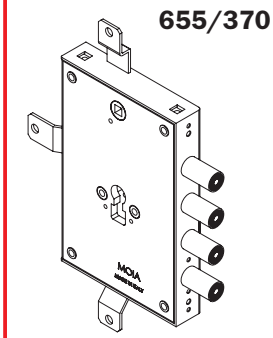
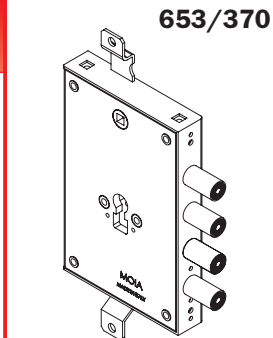
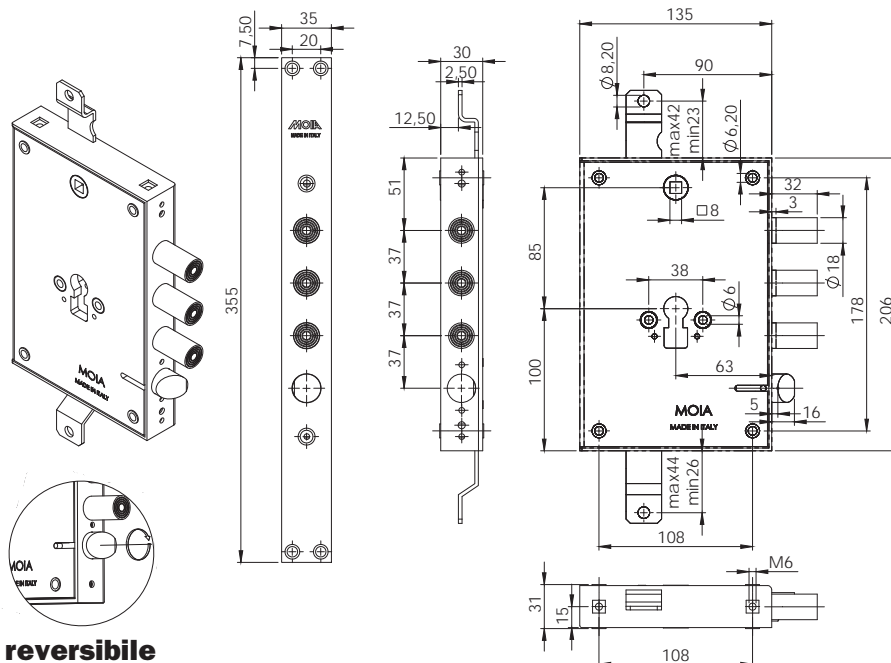
VARIANTI



CODIFICA	CODICE	MANO		
		DX	SX	
	654/370DF	●		
	654/370SF		●	
	654/370DFB	●		●
	654/370SFB		●	●
	754/370DF	●	●	
	754/370SF		●	●
	754/370DFB	●	●	●
	754/370SFB		●	●



DISEGNO TECNICO



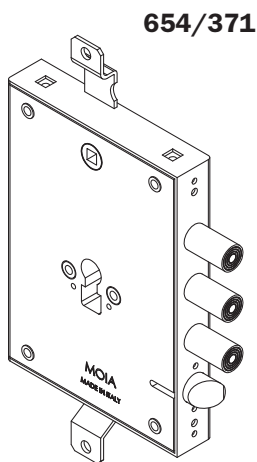
IMBALLO			OPTIONAL					

IDENTIFICATIVI SERRATURA

INGRESSO CHIAVE
mm. 73

PASSO CHIAVISTELLI
mm. 37

VARIANTI

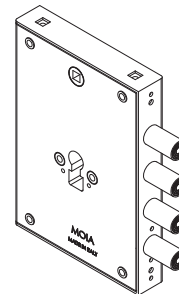


654/371

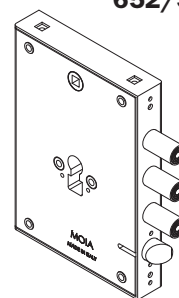
CODICE	MANO			
	DX	SX		
654/371DF	●			
654/371SF		●		
654/371DFB	●			●
654/371SFB		●		●
754/371DF	●		●	
754/371SF		●	●	
754/371DFB	●		●	●
754/371SFB		●	●	●

CODIFICA

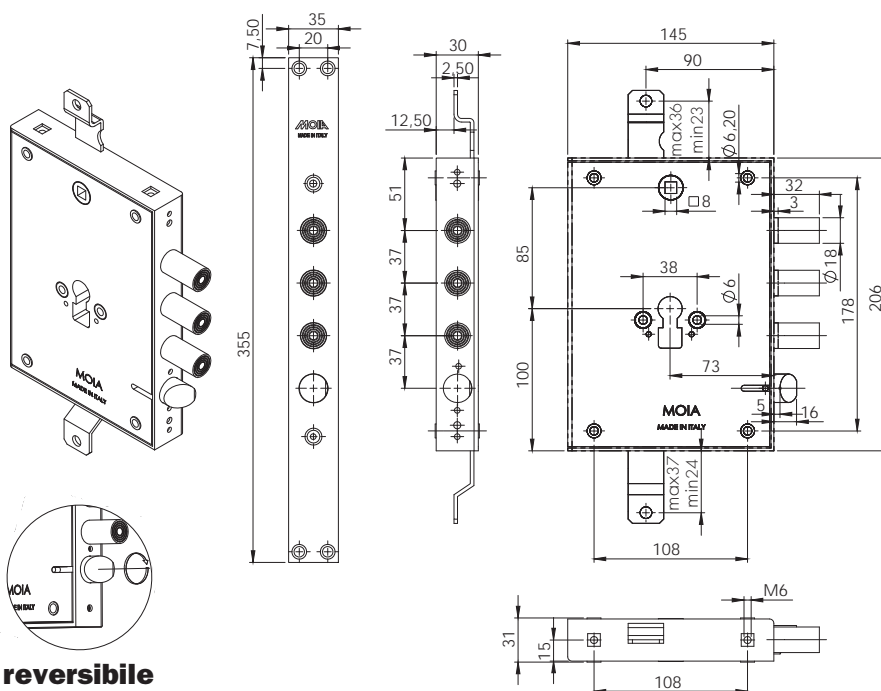
651/371



652/371

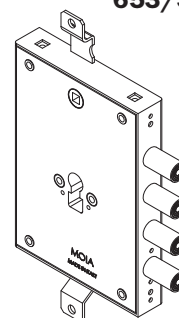


DISEGNO TECNICO

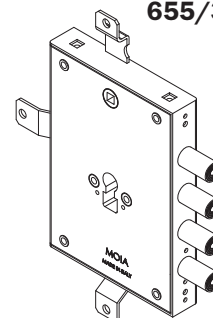


reversibile

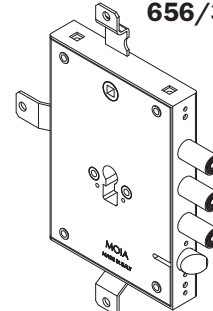
653/371



655/371



656/371



IMBALLO



OPTIONAL

